



## 77<sup>th</sup> Annual Scientific Meeting March 6 – 9, 2019 – Vancouver, BC

### WEDNESDAY, MARCH 6

**7:00am – 7:00pm**

7:00am-1:00pm  
1:00pm-7:00pm

**Registration**

**Room: Junior Ballroom Foyer**  
**Room: Lower Lobby North Tower**

**7:30am – 12:15pm**

**Young Investigator Colloquium**  
**Room: Junior Ballroom D**

**7:30am – 8:30am**

8:30am

**Diversity Travel Scholars Program**  
**Room: Junior Ballroom D**  
**Room: Port McNeill**

**7:30am – 8:30am**

8:30am

**MD Travel Scholars Program**  
**Room: Junior Ballroom D**  
**Room: Port McNeill**

**8:00am – 12:00pm**

**APS Council Meeting**  
**Room: Port Alberni (invitation only)**

**8:00am – 12:00pm**

**Morning Workshop**

**Neurocognition & Chronic Disease: Use of Objective Neurocognitive Measures In Chronic Disease Research**  
*developed by the APS Professional Education Committee*  
Chair: *Manisha Sawhney, PhD*  
Faculty: *Peter Hall, PhD, Ryan Smith, PhD, Misty Hawkins, PhD, Manisha Sawhney, PhD*  
**Room: Junior Ballroom C**

**8:00am – 4:30pm**

**Full Day Workshop**

**Fundamental Concepts in DOHaD and Emerging Research on Later-Life Interventions to Remediate and Redirect Unhealthy Lifecourse Trajectories Induced by Early Life Adversities**

Chairs: *Gerry Giesbrecht, PhD, Lis Nielsen, PhD*  
Faculty: *Keith Godfrey, PhD, Teresa Seeman, PhD, Jesse Baldwin, PhD, Margaret Sheridan, PhD, Keely Muscatell, PhD, Andrew Fuligni, PhD, Yuichi Makino, PhD, Kirk Erickson, PhD, Terrence Forrester, MBBS, PhD*  
**Room: Junior Ballroom AB**

**12:30pm – 4:30pm**

**Afternoon Workshop**

**Modeling Circadian Rhythms in Psychophysiology: A Gentle Introduction to Cosinor Analyses and Chronobiology**

Faculty: *Jennifer J. McGrath, PhD, Marc N. Jarczok, PhD, Neressa A.O. Noel, RPSGT and Julian F. Thayer, PhD*  
**Room: Junior Ballroom C**

**4:45pm – 5:15pm**

**Opening Session**

Recipients of the 2019 APS awards will be recognized.

**5:15pm – 6:10pm**

**Plenary**

**Coming to Our Senses: Implications of Embodiment for the Pathogenesis and Treatment of Major Depression**  
Introduction: *Keely A. Muscatell, PhD*  
Speaker: **Charles Raison, MD**  
**Room: Grand Ballroom AB**

**6:10pm – 7:00pm**

**Plenary**

**2019 APS Distinguished Scientist Award Lecture: Lovesick: Your Partner and Your Health**  
Introduction: *Christopher P. Fagundes, PhD*  
Speaker: **Janice Kiecolt-Glaser, PhD**  
**Room: Grand Ballroom AB**

**7:00pm – 8:15pm**

**Citation Poster Reception**

Posters #1-34 will be presented  
**Room: Grand Ballroom CD**

**7:00pm**

**Sweet Tweets**

**Room: Grand Ballroom Foyer**

Not sure how Twitter works, or don't have an account yet? The "Sweet Tweets" lesson is for you! Visit the Social Media Task Force during the Citation Poster session to learn about Twitter and share online the exciting research presented at APS. Pssst - chocolates and prizes involved!

**8:30pm – 10:00pm**

**Student Reception**

Students and Trainees are invited to this event but must have signed up. Please visit the APS Registration Desk before 5:00 pm for details.  
**Note: this event is offsite**

**7:00am – 6:30pm**      **Annual Meeting Registration**  
**Lower Lobby**

**7:00am – 8:00am**      **Continental Breakfast**  
**Grand Ballroom Foyer**  
**Junior Ballroom Foyer**

**7:00am – 8:00am**      **Roundtables & Special Events**

**First Time Attendee/New Member Welcome Breakfast**  
**Room: Junior Ballroom ABC**

All new, prospective and curious APS members are encouraged to come to this meet and greet session. The APS Membership Committee and “experienced” APS members will be on hand to greet you and answer any questions you may have about the meeting or about APS. This is a great opportunity to kick off the meeting by connecting with members new and old, and experiencing the welcoming culture of APS.

**Roundtable: From Research to Practice: Finding Better Ways to Bridge the Gap in Clinical Training**

Facilitators: *Robert Boland, MD, Lawson R. Wulsin, MD, Peter Shapiro, MD*

**Room: Junior Ballroom D**

**APS SIG Meeting: Developmental Origins of Health and Disease (DOHaD)**

**Room: Parksville**

**Wellness Activity: Yoga with Marie Cross**

**Room: Port Alberni**

**8:00am – 8:15am**      **Data Blitz**  
**Room: Grand Ballroom AB**

*Best Trainee Posters of the Day Data Blitz!* Each morning, we'll be kicking off the day with a data blitz. Be sure to come early and learn about some of our most exciting trainee poster presentations of the day in fast-paced 2 minute talks! Thursday presenters include: Jessica Armer, MA, Stella Fangauf, MSc Psychology, Rachel Kozik, BA, and Adam Schweber, BA

**8:15am – 9:15am**      **Plenary**

**HOW RELEVANT IS THE GUT MICROBES BRAIN COMMUNICATION IN HUMANS?**

Introduction: *Douglas A. Drossman, MD*

Speaker: **Emeran Mayer, MD**

**Room: Grand Ballroom AB**

**9:15am – 9:30am**      **Break**

**9:30am – 10:45am**      **Concurrent Sessions**

**Invited Panel on the Microbiome**

Moderator: *Gerry Giesbrecht, PhD*

Discussant: *Emeran Mayer, MD*

Speakers: *Brett Finlay, PhD, Kristen Tillisch, MD, and Karl Maier, PhD*

**Room: Grand Ballroom A**

**Late Breaking Trials 1: CHANGING DEPRESSION, MOOD & STRESS FOR BETTER HEALTH**

Chair: *Bruce L. Rollman, MD, MPH*

**Room: Grand Ballroom B**

1809 / Blended Collaborative Care for Treating Systolic Heart Failure And Comorbid Depression: 12-Month Primary Outcomes From The Hopeful Heart Trial

**Bruce L. Rollman, MD, MPH**

1433 / Randomized Controlled Trial of Tai Chi Among Older Adults with Hypertension: Effects on Depressive Symptomatology, Interoceptive Awareness, And Cardiovascular Responses To Brief Exercise

**Kathleen L. Wilson, MS**

1490 / A Randomized Trial of A Positive Psychology-Based Intervention To Promote Physical Activity After An Acute Coronary Syndrome: The Peace-IV Trial

**Jeff C. Huffman, MD**

1784 / Brief Mindfulness-Based Stress Management Program For A Better Mental State In Working Populations - Happy Nurse Project: A Randomized Controlled Trials

**Norio Watanabe, MD, PhD**

**Paper Session: CORTISOL**

Chair: *Peggy Zoccola, PhD*

**Room: Junior Ballroom ABC**

1725 / Cortisol Variability And Inflammation Across The Adult Life Span

**Rachel E. Koffer, PhD**

1063 / Day-To-Day Variability In Cortisol Patterns And Fatigue In Young And Older Breast Cancer Survivors

**Heather Herriot, MA**

1079 / Physical Activity Moderates Everyday-Life Within-Person Associations Between Negative Affect And Salivary Cortisol In Older Adults

**Theresa Pauly, MA**

1506 / The Momentary Affective States And Diurnal Cortisol Rhythm In Minority Youth

**Cheng K. Fred Wen, PhD**

1239 / The Impact Of Parental Cancer On Maladaptive Stress Responses In Children

**Nadine Melhem, PhD**

**Symposium 1247 / FROM BODY TO MIND (AND VICE VERSA) VIA HEART RATE VARIABILITY**

Co-Chairs: *Luca Carnevali, PhD, Elena Makovac, PhD*

Discussant: *Cristina Ottaviani, PhD*

**Room: Port McNeill**

1448 / The Influence Of An 8-Week Biofeedback Intervention On Heart Rate Variability And Functional Brain Connectivity

**Andy Schumann, DIPL-ING**

1471 / The Association Between Pain-Induced Autonomic Reactivity And Conditioned Pain Modulation Is Mediated By The Periaqueductal Grey  
**Elena Makovac, PhD**

1248 / The Effects Of Excitatory tDCS Over The Left Dorsolateral Prefrontal Cortex On Autonomic And Neuroendocrine Responses To Psychosocial Stress  
**Luca Carnevali, PhD**

1543 / Loneliness In Autism: Autonomic And Affective Correlates  
**Lisa Quadt, PhD**

**Symposium 1757 / GRIEF TRAJECTORIES AND INDIVIDUAL DIFFERENCES: FROM MIND TO BODY AND BACK?**

Chair: *Christopher P. Fagundes, PhD*  
**Room: Parksville**

1760 / Mechanisms And Trajectories Underlying Bereavement: A Biobehavioral Investigation  
**Christopher P. Fagundes, PhD**

1761 / Contribution Of Attachment Theory For Bereavement Related Immune Dysregulation  
**Angie LeRoy, PhD**

1762 / Grief, Neighborhood Context, And Health Disparities  
**Levi Saucedo, BA**

1763 / Body To Mind: Peripheral Inflammation And Prolonged Grief  
**Lydia Wu, BA**

**Paper Session: DISCRIMINATION**

Chair: *Jay Patel, BA*  
**Room: Junior Ballroom D**

1691 / Individual-Level Discrimination Interacts With Depressive Symptoms To Predict Intimal-Medial Thickening In African Americans  
**Danielle L. Beatty Moody, PhD**

1660 / Religious Affiliation Status Influences The Relation Of Discrimination To Pulse Wave Velocity Among African American Men  
**Jason J. Ashe, MDiv**

1024 / Parasympathetic Activity In Indigenous Peoples During A Discrimination Experience Speaking Task  
**Chad Danyluck, PhD**

1718 / Dispositional Characteristics As Correlates Of Health And Wellbeing Among Marginalized And Indigenous Communities In Vancouver, Canada  
**Amber R. Campbell, BSc**

1331 / Discrimination And Daily Activities During Adolescence  
**Danny Rahal, MA**

**10:45am – 11:00am**

**Refreshment Break**  
**Grand Ballroom Foyer**  
**Junior Ballroom Foyer**

**11:00am – 12:00pm**

**Concurrent Sessions**

**Invited Symposium: OPEN SCIENCE AND PSYCHOSOMATIC MEDICINE**

Moderator: *Daryl O'Connor, PhD*

Speakers: *Daryl O'Connor, PhD, Julian Thayer, PhD, Mark Lumley, PhD, A. Janet Tomiyama, PhD*

**Room: Grand Ballroom A**

**Symposium 1186 / IDENTIFYING INTERVENTION TARGETS TO SIMULTANEOUSLY REDUCE POSTTRAUMATIC STRESS DISORDER AND SECONDARY CARDIOVASCULAR DISEASE RISK: THE REACH STUDIES**

Chair: *Donald Edmondson, PhD, MPH*

Discussant: *Ian Kronish, MD, MPH*

**Room: Junior Ballroom D**

1641 / The Association of Threat Perception and Patient Treatment Preferences In Acute Stroke  
**Bernard P. Chang, MD, PhD**

1688 / An Examination of Diurnal Heart Rate and Cardiac-Related Intrusive Thoughts in Acute Coronary Syndrome Patients with and without Posttraumatic Stress Symptoms  
**Jeffrey L. Birk, PhD**

1696 / Trajectories of Posttraumatic Stress Symptoms in Patients with Confirmed and Rule-Out Acute Coronary Syndrome  
**Laura Meli, MS**

**Paper Session: SOCIOECONOMIC STATUS**

Chair: *Nataria Joseph, PhD*

**Room: Grand Ballroom B**

1770 / Subjective Socioeconomic Status And C-Reactive Protein In Children And Adolescents  
**Eloïse Fairbank, BA**

1179 / Attending Schools With Greater Socioeconomic-Based Achievement Gaps Predicts Worse Adolescent And Adult Health Among Lower Socioeconomic Status Students  
**Cynthia S. Levine, PhD**

1011 / Life Course Socioeconomic Status, Daily Stressor Reactivity, Risk Factors Of Chronic Kidney Disease, And Kidney Function Among Adults In The Midlife In The United States (MIDUS) Study  
**Agus Surachman, MS**

1192 / Psychosocial Moderators Of Sociodemographic Health Disparities In The Healthy Aging In Neighborhoods Of Diversity Across The Life Span (HANDLS) Study  
**Lauren M. Faulkner, MA**

**Paper Session: HIV**

Chair: *Marie Cross, MA*

**Room: Parksville**

1662 / Affective Processing Of Trauma Essay Predicts Survival Over 17 Years In HIV  
**Gail Ironson, MD, PhD**

1549 / Depression As A Potential Risk Factor For Cardiovascular Disease In People With HIV: A Systematic Review

**Brittanny M. Polanka, MS**

1625 / Viral Load Suppression, Mental Health, And Quality Of Life Among People Living With HIV In South Carolina

**Hyunsan Cho, PhD**

1712 / Alexithymia And Cardiac Interoceptive Awareness In Women Living With HIV

**Roger McIntosh, PhD**

## Paper Session: DIABETES

Chair: *Tasneem Khambaty, PhD*

**Room: Port McNeill**

1610 / Weight Change In Depression And Onset Of Type 2 Diabetes

**Eva Graham, MSc**

1351 / Baseline Cardiometabolic Impairment Severity And Improvements In Glucoregulation And Inflammation Among Treatment Seeking Obese Adults

**Caitlin E. Smith, MS**

1201 / Sex Differences In Interleukin-6 Stress Responses In People With Type 2 Diabetes

**Laura Panagi, MSc**

1057 / Undiagnosed Diabetes Among Immigrant And Racial/Ethnic Minority Adults In The U.S.: Nhanes 2011-2016

**Loretta Hsueh, MA**

## Paper Session: MINDFULNESS INTERVENTIONS

Chair: *Brooke Jenkins, PhD*

**Room: Junior Ballroom ABC**

1043 / A Randomized Controlled Trial Of A Mindfulness Intervention For Grief In Widows And Widowers

**Lindsey M. Knowles, MA**

1132 / Cognitive Behavioral Therapy, Mindfulness, And Cortisol Habituation: A Randomized Controlled Trial

**Andrew W. Manigault, MS**

1722 / The Moderating Effects Of Distress Tolerance And Expectations On A Mindfulness Intervention During Stereotactic Breast Biopsy

**Kelsey L. Sinclair, BA**

1740 / Spiritual Wellbeing As A Moderator Of Brief Mindfulness Intervention On Anxiety During Stereotactic Breast Biopsy

**Shaelyn Fowler, BS**

**12:00pm – 1:15pm**

**Lunch on your own  
& Special Events**

**APS Committee Meeting:  
Professional Education**

**Room: Gulf Islands BC**

**Stress Profile Task Force**

**Room: Gulf Islands A**

**12:15pm – 12:45pm**

**Wellness Activity: Tai Chi with  
Crista Crittenden**

**Room: Port Alberni**

Note: if you are attending a WELLNESS Activity and haven't completed a disclaimer yet, please visit the APS Registration Desk.

**1:15pm – 2:15pm**

**Concurrent Sessions**

## Invited Symposium: BEST PRACTICES IN TEACHING PSYCHOSOMATIC MEDICINE

Moderators: *Victoria Burns, PhD and Nataria Joseph, PhD*

Speakers: *Victoria Burns, PhD, Crista Crittenden, MPH, PhD, Douglas Drossman, MD and Nataria Joseph, PhD*

**Room: Grand Ballroom A**

## Paper Session: CAREGIVING

Chair: *Joan Monin, PhD*

**Room: Junior Ballroom D**

1707 / Chronic Stress And Depressive Symptoms Moderate The Impact Of Capitalization Of Positive Affect On Inflammation

**Jean-Philippe Guoin, PhD**

1170 / Earlier Oxytocin And Interleukin-6 Predict Changes In Caregiving Stress During The First Year After The Cancer Diagnosis Of Relatives

**Youngmee Kim, PhD**

1472 / Pathways To Psychophysiological Resilience In Young Informal Caregivers: Mapping The Impacts Of Chronic Stress

**Tamsyn A. Hawken, MSC**

1579 / Combining Telomere Length And Telomerase Activity To Examine The Impact Of The Chronicity Of Caregiving

**Timothy S. Sannes, PhD**

## Paper Session: LINKING NEIGHBORHOODS TO HEALTH

Chair: *Tom Fuller-Rowell, PhD*

**Room: Port McNeill**

1136 / Concentrated Neighborhood Privilege Attenuates The Relationships Between Household Income, Pulmonary Function, And Quality Of Life Among Youth With Asthma

**Makeda K. Austin, PhD**

1074 / Linking Perceived And Neighborhood Stress And Cardiovascular Risk As A Function Of Acculturation And Socioeconomic Status In Mexican Americans: Implications For The Latinx Health Paradox

**Maryam Hussain, PhD**

1535 / Does Neighborhood Walkability And Area Deprivation Correlate With Physical Activity Among Recently Hospitalized Patients With Systolic Heart Failure And Co-Morbid Depression?

**Julia P. Holber, BA**

### Not a Member?

Visit the APS Registration Desk or look for a representative of the Membership Committee.

They're wearing **ASK ME!** buttons.



1461 / Community Socioeconomic Disadvantage Associates With Preclinical Vascular Disease Via Altered Cortisol Activity  
**Karissa Miller, PhD**

**Symposium 1139 / EARLY LIFE MICROBIOME AND CHILD HEALTH**

Chair: *Gerald Giesbrecht, PhD*

**Room: Grand Ballroom B**

1195 / Infant Gut Microbiome Associated With Anxious Behavior And Neurocircuitry Of Fear  
**Alexander L. Carlson, BS**

1292 / Associations Between Gut Microbiota And Internalizing Problems In Preschoolers  
**Gerald Giesbrecht, PhD**

1287 / The Infant Gut Microbiome: A Common Means By Which Environmental Factors Affect Asthma Outcomes?  
**Hind Sbihi, PhD**

1165 / Microbial Multi-Omics Differentiates Children With Irritable Bowel Syndrome From Healthy Control  
**Emily B. Hollister, PhD**

**Paper Session: SEX DIFFERENCES IN HEART DISEASE**

Chair: *Nina Kupper, PhD*

**Room: Junior Ballroom ABC**

1115 / Higher Plasma Levels Of CT-PROAVP Are Linked To Less Anxiety In Men But Not Women With Cardiovascular Risk Factors. Results From The Observational Diast-Chf Study  
**Monika Sadlonova, MD**

1470 / Gendered Associations Of Depressive Symptoms And Anxiety With Inflammatory Biomarkers In Patients With Non-Obstructive Coronary Artery Disease: Role Of Lifestyle Factors  
**Paula M.C. Mommersteeg, PhD**

1150 / Women Are Affected Most By The Effect Of Chronic Stress On The Course Of Fatigue After A Cardiac Event, The Thoresci Study  
**Nina Kupper, PhD**

1210 / Sex And Gender-Stratified Risks Of Psychological Factors For Incident Ischemic Heart Disease And Prognosis: A Meta-Analysis In 2,373,326 Women And 3,441,773 Men  
**Veerle R. Smaardijk, MSc**

**Symposium 1346 / EMOTIONAL AWARENESS AND CHRONIC PAIN: THEORETICAL, BASIC SCIENCE, AND TREATMENT ADVANCES**

Chair: *Mark A. Lumley, PhD*

Discussant: *Christoph Herrmann-Lingen, MD*

**Room: Parksville**

1487 / Biased Competition Favoring Physical Over Emotional Pain: Possible Neurobiological Mechanisms Explaining The Link Between Early Adversity And Chronic Pain  
**Richard D. Lane, MD, PhD**

1363 / Can Expressed Interpersonal Distress Reverse The Effects Of Early Interpersonal Adversity On Somatoform/ Centralized Pain? On Neuropsychophysiologic Mechanisms Of Symptom Formation And Implications For Treatment  
**Alla Landa, PhD**

1347 / Emotional Awareness And Expression Therapy For Chronic Pain: Outcomes And Emotion-Focused Moderators  
**Mark A. Lumley, PhD**

**2:15pm – 2:30pm**

**Refreshment Break**

**Grand Ballroom Foyer**

**Junior Ballroom Foyer**

**2:30pm – 3:45pm**

**Concurrent Sessions**

**Symposium 1385 / THE FUTURE OF SMARTPHONES AND MOBILE DEVICES IN BIOBEHAVIORAL SCIENCE**

Co-Chairs: *Carissa A. Low, PhD, Charles, Jonassaint, PhD*

Discussant: *Eva Szigethy, MD, PhD*

**Room: Grand Ballroom A**

1387 / Relationships Between Smartphone And Wearable Sensor Data, Symptoms, Quality Of Life, And Inflammation After Pancreatic Surgery  
**Carissa A. Low, PhD**

1391 / I See Your Pain! Design And Development Of A Novel Technology-Based Tool For Communicating And Assessing Pain That Uses Animations  
**Charles Jonassaint, PhD**

1392 / Is It Your Phone or How You Use It? An Investigation Of The Benefits Smartphones May Provide When Recovering From Stress  
**John Hunter, MA**

1393 / Smartphone And In-Person Mindfulness Interventions Boost Positive Emotions Through Acceptance Mechanisms: Evidence From Two Randomized Controlled Trials  
**Emily K. Lindsay, PhD**

**Symposium 1539 / PSYCHOSOCIAL EXPERIENCES AND THE REGULATION OF THE HUMAN GENOME**

Co-Chairs: *Kelly E. Rentscher, PhD, Allison Farrell, PhD*

Discussant: *Steve Cole, PhD*

**Room: Grand Ballroom B**

1540 / Couples' Relationship Closeness Buffers The Effects Of Psychosocial Stress On Cellular Stress And Biological Aging Marker P16INK4a  
**Kelly E. Rentscher, PhD**

**Kelly E. Rentscher, PhD**

1541 / Transcriptomic And Cell-Type Compositional Effects Of Self-Disclosure  
**Allison K. Farrell, PhD**

**Allison K. Farrell, PhD**

1542 / Depressive Symptoms And Transcriptional Indicators Of Immune Alterations During Late Adolescence  
**Jessica Chiang, PhD**

**Jessica Chiang, PhD**

1582 / Risk Exposure And Harsh Parenting In Adolescence Predict Epigenetic Aging In Young Adulthood  
**Katherine B. Ehrlich, PhD**

**Katherine B. Ehrlich, PhD**

**Symposium 1157 / STRESS AND RESILIENCE DURING THE POSTPARTUM PERIOD: IMPLICATIONS FOR MATERNAL AND CHILD HEALTH OVER THE LIFE COURSE**

Co-Chairs: *Alyssa D. Cheadle, PhD, Christine Guardino, PhD*  
Discussant: *Molly Fox, PhD*

**Room: Junior Ballroom ABC**

1511 / Religiousness And Spirituality Predict Lower Inflammation In Women Six Months After The Birth Of A Child  
**Alyssa D. Cheadle, PhD**

1193 / Preconception And Prenatal Stressful Life Events, Third Trimester Inflammatory Gene Expression, And Gestational Length  
**Kharah M. Ross, PhD**

1536 / Diurnal Salivary Cortisol Patterns In Preschool-Aged Children: Associations With Maternal Pre-Pregnancy And Prenatal Stress  
**Christine M. Guardino, PhD**

1435 / Higher Maternal HbA1C After The Birth Of One Child Prospectively Predicts Executive Functioning Deficits In Subsequent Offspring  
**Julia E. Morgan, MA**

**Symposium 1614 / PREDICTION AND PREVENTION OF EMOTIONAL AND PHYSICAL PROBLEMS IN BREAST CANCER SURVIVORS**

Chair: *Madelon L. Peters, PhD*

**Room: Junior Ballroom D**

1699 / Illness Perception Of Cancer-Related Residual Symptoms, Fatigue And Intentions Towards A Healthy Lifestyle In Post-Treatment Cancer Survivors  
**Ilse Mesters, PhD**

1695 / Fear Of Cancer Recurrence, Optimism And Trait Resilience Predict Emotional And Physical Functioning In Breast Cancer Survivors  
**Madelon L. Peters, PhD**

1634 / A Single Session Psychological Intervention For Women Undergoing Surgery For Breast Cancer: A Pilot  
**Katherine Hadlandsmayth, PhD**

1616 / Postoperative Pain After Breast Cancer Surgery: The UK Prevention Of Shoulder Problems Trial (UK PROSPER)  
**Julie Bruce, PhD**

**Symposium 1241 / PSYCHOSOCIAL RESOURCES AND RISK FOR CARDIOVASCULAR DISEASE: FINDINGS FROM ACROSS THE LIFE COURSE**

Chair: *Julia K. Boehm, PhD*

Discussant: *Tara Gruenewald, PhD*

**Room: Parksville**

1315 / Psychosocial Resources In Childhood And Weight Status Thirty Years Later  
**Julia K. Boehm, PhD**

1476 / Association Between Psychological Resilience Following Childhood And Adolescent Adversity And Diurnal Salivary Cortisol In Young Adulthood  
**Kristen Nishimi, MPH**

1312 / Optimism And Risk Of Hypertension: A Target For Primordial Prevention

**Laura D. Kubzansky, PhD**

1779 / Childhood Disadvantage And Inflammation: An Examination Of Psychological Buffers Among Black And White Americans

**Jennifer Boylan, PhD**

**Symposium 1401 / DIET ACROSS THE LIFESPAN: STRESS, METABOLIC HEALTH, AND COGNITION**

Co-Chairs: *Matt Lehrer, MS, Janet Tomiyama, PhD*

**Room: Port McNeill**

1402 / Effects Of Stress On Eating Behavior In Adults And Children: Two Systematic Reviews And Meta-Analyses  
**Daryl B. O'Connor, PhD**

1406 / Stress Eating Predicts Cardiometabolic Conditions Over A 7-9 Year Follow-Up

**Matt Lehrer, MS**

1403 / High-Fat Diet In The Context Of Aging Robustly And Negatively Impacts Amygdala Microglial Morphology And Function Causing Long-Term Amygdala-Dependent Memory Impairments

**Ruth M. Barrientos, PhD**

1405 / Baseline Associations Between Biomarkers, Neurocognitive Function, And Self-Regulation Indices In The Cognitive And Self-Regulatory Mechanisms Of Obesity Study (COSMOS)

**Misty Hawkins, PhD**

**3:45pm – 3:55pm**

**Transition**

**3:55pm – 5:25pm**

**Concurrent Sessions**

**Invited Symposium: THE INTEROCEPTIVE MIND IN HEALTH AND DISEASE**

Chair: *Richard D. Lane, MD, PhD*

Discussant: *Hugo Critchley, MBChB DPhil FRSB FRCPsych*  
Speakers: *Frederike Petzschner, PhD, Sarah Garfinkel, PhD, Sahib Khalsa, MD, PhD*

**Room: Grand Ballroom A**

**Paper Session: SOCIAL RELATIONSHIPS**

Chair: *Crista Crittenden, MPH, PhD*

**Room: Grand Ballroom B**

1633 / Close Familial Relationships Decrease Risk Of Death For Widowers: Results From The National Social Life Health And Aging Project (NSHAP)

**Atina Manvelian, MA**

1833 / An Experimental Study of the Physiological Effects of Visible And Invisible Social Support Provided In-Person And Via Text Message

**Emily D. Hooker, PhD**

1060 / The Impact Of Romantic Partner's Physical Proximity And Attachment Working Models On Cardiovascular Reactivity In The Laboratory

**Kyle J. Bourassa, MA**

1438 / Time-Varying Associations Between Sleep Quality And Affective States: Evidence For Dyadic Effects In The Everyday Lives Of Older Couples  
**Nadine Ungar, PhD**

1831 / The Effect Of Sleep Quality On Daily Support Provision, Perceptions Of Responsiveness, And Relationship Quality In Romantic Couples  
**Heidi S. Kane, PhD**

1134 / Testosterone To Cortisol Ratio And Aggression Toward One's Romantic Partner After A Conflict Discussion: A Test Of The Moderating Effect Of Provocation  
**Andrew W. Manigault, MS**

**Paper Session: SLEEP**

Chair: *Judith Carroll, PhD*

**Room: Junior Ballroom D**

1436 / Long-Term Sleep Disruption Following Hematopoietic Stem Cell Transplantation: Prevalence And Biobehavioral Predictors  
**Erin S. Costanzo, PhD**

1342 / Poor Sleep Quality Is Associated With Failure To Suppress The Default Mode Network Under High Working Memory Demands In OEF/OIF/OND Veterans With A History Of Mild Traumatic Brain Injury  
**Holly K. Rau, PhD**

1236 / Cardiometabolic And Sleep Pathways To Cognitive Functioning At Midlife  
**Lauren N. Whitehurst, PhD**

1120 / Psychological And Health Correlates Of Night-To-Night Variability In Sleep In Nurses  
**Danica C. Slavish, PhD**

1441 / Association Of Non-Restorative Sleep With Subjective Sensitivity To Environmental Noise  
**Daniel Fong, PhD**

1570 / Parental Expectations Of Sleep Needs Linked To Children's Sleep Duration And Sleep Hygiene  
**Denise C. Jarrin, PhD**

**Paper Session: STRESS**

Chair: *Claudia Trudel-Fitzgerald, PhD*

**Room: Junior Ballroom ABC**

1742 / Stress-Induced Transient Endothelial Dysfunction Is Associated With Adverse Outcomes In Coronary Artery Disease Patients  
**Bruno B. Lima, MD PhD**

1202 / Beta-Adrenergic Blockade Blunts Inflammatory And Antiviral/Antibody Gene Expression Responses To Acute Social Stress  
**Jennifer K. MacCormack, MA**

1518 / Reactivity To Acute Psychological Stress And Its Relationship To Future Health And Disease Outcomes: A Systematic Review Of Prospective Evidence  
**Anne I. Turner, PhD**

1730 / Association Of Repeated Assessments Of Perceived Stress, Anxiety, And Anger With Subsequent Hospitalizations In Patients With Heart Failure: Three Year Follow-Up  
**David S. Krantz, PhD**

1594 / Predicting Sick-Leave Rates At The Work-Group Level: Why Do Averaged Psychosocial Work Conditions Matter More Than Averaged Medical Conditions Or Group Average Health Behaviors?  
**Joachim E. Fischer, MD**

1664 / Mobile Measurement Of Psychological Stress: An Exploratory Pilot Study Comparing Passive Mobile Phone Sensing Data With Biological And Self-Reported Stress  
**Michelle L. Byrne, PhD**

**Symposium 1001 / HOT TOPICS IN BRAIN-GUT INTERACTION**

Co-Chairs: *Maida J. Schweber, PhD, Susan Levenstein, MD*

**Room: Parksville**

1029 / Brain Gut Microbiome Interactions In IBS  
**Emeran A. Mayer, MD**

1028 / Food And Mood: Gastrointestinal Control Of The Human Reward System  
**Lukas Van Oudenhove, MD, PhD**

1010 / Brain-Gut Psychotherapy  
**Laurie A. Keefer, PhD**

1009 / Central Neuromodulators for Chronic GI Pain  
**Douglas A. Drossman, MD**

**5:25pm – 5:30pm**

**Transition**

**5:30pm – 6:30pm**

**Roundtables & Special Events**

**Roundtable: So...you want to get started in microbiome research. Now what?**

Facilitators: *Gerry Giesbrecht, PhD, Emeran Mayer, MD, Kirsten Tillisch, MD, Lisa Christian, PhD, Desiree Delgadillo-Chase*

**Room: Grand Ballroom A**

**Roundtable: Careers in Teaching Psychosomatic Medicine**

Facilitators: *Victoria Burns, PhD; Nataria Joseph, PhD; Marie Cross, Crista Crittenden, PhD*

**Room: Junior Ballroom D**

**Trainee Roundtable: Managing Your Social Media Presence**

Facilitators: *Misty Hawkins, PhD; Tamsyn Hawken, PhD; Charles Jonassaint, PhD*

**Room: Junior Ballroom ABC**

## Salon #1: Meet with the Professors

Please note: attendance is on a first-come, first-served basis.

**Susan Lutgendorf & Mike Antoni**

**Room: Port Alberni**

**Lorenzo Cohen & Linda Carlson**

**Room: Port Hardy**

**Christoph Herrmann-Lingen & Bruce Rollman**

**Room: Gulf Islands A**

**Joel Dimsdale & Peter Shapiro**

**Room: Gulf Islands BC**

**6:30pm – 7:45pm**

**7:45pm – 9:00pm**

## Poster Session 1

Posters #35-122 will be presented.

**Room: Grand Ballroom CD**

## Mentor/Mentee Program

You must have pre-registered for this event to attend. Please check at the APS Registration Desk for additional availability.

**Room: 4th Floor, North Tower (Ports McNeill, Alberni & Hardy)**

# FRIDAY, MARCH 8

**7:00am – 6:30pm**

**Annual Meeting Registration  
Lower Lobby**

**7:00am – 8:00am**

**Continental Breakfast  
Grand Ballroom Foyer  
Junior Ballroom Foyer**

**7:00am – 8:00am**

**Roundtables & Special Events**

**Wellness Activity:** Morning Run with Linda Carlson

**Meet: in hotel lobby**

Note: if you are attending a WELLNESS Activity and haven't completed a disclaimer yet, please visit the APS Registration Desk.

**APS SIG Meeting: Affect Science in Medicine**

**Room: Gulf Islands BC**

**Trainee Roundtable: Careers in Psychosomatic Medicine**

Organizers: Marie Cross, Jay Patel, Matthew Shay, MSc  
Facilitators: Aimee Christie, PhD; Alyssa Cheadle, PhD; John Ruiz, PhD; Carissa Low, PhD, Sally Dickerson, PhD

**Room: Junior Ballroom ABC**

**Roundtable: Communication Skills to Optimize the Patient-Provider Relationship**

Facilitator: Douglas A. Drossman, MD

**Room: Junior Ballroom D**

**8:00am – 8:15am**

**Data Blitz  
Room: Grand Ballroom ABC**

Best Trainee Posters of the Day Data Blitz! Each morning, we'll be kicking off the day with a data blitz. Be sure to come early and learn about some of our most exciting trainee poster presentations of the day in fast-paced 2 minute talks! Friday presenters include Rebecca Kim, BA, Kelly McReynolds, BA, Patricia Pedreira, BS, and Olivia Silke, BA

**8:15am – 9:15am**

**Plenary**

**CARDIOVASCULAR DISEASE IN AFRICAN-AMERICANS:  
MIND-BODY (AND BODY-MIND) INSIGHTS**

Introduction: A. Janet Tomiyama, PhD

Speaker: **Tené Lewis, PhD**

**Room: Grand Ballroom AB**

**9:15am – 9:25am**

**Transition**

**9:25am – 10:25am**

**Plenary**

**2019 Presidential Address**

Introduction: Peter A. Shapiro, MD

Speaker: **Bruce L. Rollman, MD, MPH**

**Room: Grand Ballroom AB**

**10:25am – 10:30am**

**Transition**

**10:30am – 11:15am**

**Plenary**

**Patricia R. Barchas Award Lecture:**

**Human Social Genomics**

Introduction: Paige Green, PhD, MPH

Speaker: **Steve Cole, PhD**

**Room: Grand Ballroom AB**

**11:15am – 11:30am**

**Refreshment Break  
Grand Ballroom Foyer  
Junior Ballroom Foyer**

**11:30am – 12:30pm**

**Concurrent Sessions**

**Invited Symposium: PSYCHOSOMATIC MEDICINE  
APPROACHES TO SICKLE CELL ANEMIA**

Chair: **Tené Lewis, PhD**

Speakers: Cecelia Valrie, PhD, Shawn Bediako, PhD, and Charles Jonassaint, PhD

**Room: Grand Ballroom A**

**Paper Session: NEUROSCIENCE**

Chair: **Keely A. Muscatell, PhD**

**Room: Grand Ballroom B**

1668 / Looking For Semantic Memories In The Brain Of Typical And Atypical Children With Machine Learning  
**Dmitrii Paniukov, PhD**

1728 / Distinct Brain Based Chronic Pain Subgroups Associated With Widespread Pain  
**Jennifer S. Labus, PhD**

1258 / Ventromedial Prefrontal Cortex Connectivity During And After Psychological Stress  
**Annie T. Ginty, PhD**

1607 / Brain Correlates Of Angina During Acute Mental Stress  
**Bruno B. Lima, MD, PhD**



**Paper Session: INFLAMMATION**

Chair: *Peggy Zoccola, PhD*

**Room: Junior Ballroom ABC**

1750 / The Mechanistic Role Of Inflammation On The Association Between Cardiac Vagal Activity And The Lipid Accumulation Product  
**Dewayne P. Williams, PhD**

1772 / An Inflammatory Pathway Links Retrospective Recall Of Childhood Physical Abuse With Resting Corticolimbic Connectivity In Midlife Adults  
**Thomas E. Kraynak, MS**

1033 / Psychosocial Correlates Of Inflammation In Ethnic And Racial Minorities: A Systematic Review  
**Devika R. Jutagir, PhD**

1373 / Positive Association Of Pro-Inflammatory Processes With Psychosocial Well-Being In Highly Functional Nonagenarians  
**Nicolas Rohleder, PhD**

**Symposium 1384 / UNPACKING THE INFLUENCE OF STRESS ON SLEEP: DO EMOTION AND STRESSOR CHARACTERISTICS PLAY A ROLE?**

Co-Chairs: *Kate A. Leger, PhD, Brooke Jenkins, PhD*

Discussant: *Martica Hall, PhD*

**Room: Junior Ballroom D**

1386 / Affective Recovery from Stress and its Associations with Sleep  
**Kate A. Leger, PhD**

1449 / The Stress Buffering Effect of Positive Affect on Sleep: Considering Arousal Level of Positive Affect  
**Brooke N. Jenkins, PhD**

1422 / Impact of perceived and anticipated discrimination on global sleep quality among Latinx young adults  
**Aric A. Prather, PhD**

**Paper Session: AMBULATORY BLOOD PRESSURE**

Chair: *Matthew R. Cribbet, PhD*

**Room: Port McNeill**

1693 / Is Rumination Bad For Your Health? Comparing Trait And Momentary Assessments Of Rumination On Ambulatory Blood Pressure  
**Matthew J. Zawadzki, PhD**

1548 / The Relationship Between Trait Hostility And Ambulatory Blood Pressure And Momentary Affective Health Varies By Location  
**Amanda K. Small, BA**

1643 / Leisure Promotes Ambulatory Blood Pressure Dipping: A Within-Person Randomized Field Experiment  
**Marcellus M. Merritt, PhD**

1816 / Examining The Associations Between Objective Sleep And Ambulatory Blood Pressure In A Community Sample Over Time  
**Caroline Y. Doyle, MA**

**Panel Session: EMOTION AFTER MI: Interventions, Recurrent Events, and Mortality. State of The Field 2019**

Speakers: *Peter A. Shapiro, MD, Jeff C. Huffman, MD*

**Room: Parksville**

**12:30pm – 1:30pm**

**Lunch on your own & Special Events**

**Psychosomatic Medicine Editorial Board Meeting** (by invitation only)  
**Room: Port Alberni**

**APS Committee Meeting: Membership**  
**Room: Gulf Islands A**

**12:45pm – 1:15pm**

**Wellness Activity: Mindfulness Approaches to Releasing us from Scientific Biases with Eric Loucks**  
**Room: Grand Ballroom A**

Note: if you are attending a WELLNESS Activity and haven't completed a disclaimer yet, please visit the APS Registration Desk.

**1:30pm – 2:45pm**

**Concurrent Sessions**

**Invited Symposium: CARDIOVASCULAR STRESS REACTIVITY AND HEALTH: WHERE ARE WE NOW?**

Chair: *Chair: Anna C. Whittaker, PhD*

Panelists: *Brian Hughes, PhD, William Lavallo, PhD, Annie Ginty, PhD, Andrew Steptoe, DSc, and Karen Quigley, PhD*

**Room: Grand Ballroom A**

**Symposium 1044 / THE NECESSARY INSEPARABILITY OF MIND AND BODY: IMPLICATIONS OF COMPUTATIONAL NEUROSCIENCE FOR PSYCHOSOMATIC MEDICINE**

Chair: *Sarah N. Garfinkel, PhD*

Discussant: *Richard Lane, MD, PhD*

**Room: Grand Ballroom B**

1089 / The Role Of Somatic Error In Interoceptive Psychopathology  
**Sahib S. Khalsa, MD, PhD**

1094 / Computational Modelling Of Interoception Offers Fresh Insight Into Psychological Determinants Of Cardiovascular Risk  
**Hugo D. Critchley, DPhil**

1232 / Predicting Our Heart  
**Frederike Petzschner, PhD**

1129 / An Embodied Neurocomputational Framework For Organically Integrating Biopsychosocial Processes  
**Ryan S. Smith, PhD**

**Symposium 1155 / BIOLOGICAL EMBEDDING OF EARLY LIFE ADVERSITY ACROSS THE LIFESPAN**

Co-Chairs: *Jennifer A. Sumner, PhD, Shakira Suglia, ScD*

Discussant: *Lisbeth Nielsen, PhD*

**Room: Junior Ballroom ABC**

1282 / Do Early Life Adversity Exposures Predict Pubertal Timing?  
**Maria E. Bleil, PhD**

1283 / Early Experiences of Threat, Not Deprivation, Are Associated with Accelerated Biological Aging in Children and Adolescents

**Jennifer A. Sumner, PhD**

1284 / Child Maltreatment and Inflammatory Response to Mental Stress

**Shakira F. Suglia, ScD**

1285 / Early Life Adversity As A Risk Factor For Ill Health And Elevated Inflammation: Risk And Protective Factors

**Aoife O'Donovan, PhD**

**Paper Session: MENTAL HEALTH**

Chair: *Matthew Shay, MSc*

**Room: Junior Ballroom D**

1726 / Racial Differences In The Effectiveness Of Computerized Cognitive Behavioral Therapy For Mental Health Disorders

**Charles R. Jonassaint, PhD**

1227 / Predictors Of Behavioral Treatment Resistance In Ptsd: A Monocyte Genomics Expression Signature

**Kirstin Aschbacher, PhD**

1114 / Increased Rates Of Reward-Relevant Life Events Predict Neural Risk For Bipolar Disorders In Reward-Hypersensitive Individuals

**Iris Ka-Yi Chat, MA**

1425 / Lifetime Stress Exposure Is Associated With Number Of Lifetime Suicide Attempts In Psychiatric Outpatients With Suicidal Ideation: A Stressor Characteristics Approach

**Tory A. Eisenlohr-Moul, PhD**

1501 / Intergenerational Associations Between Lifetime Stress Exposure In Mothers With Varying Depression History And Their Daughters

**Mark R. Libowitz, BS**

**Late Breaking: RESEARCH IN CULTURE & DISCRIMINATION**

Chair: *Jennifer Boylan, PhD*

**Room: Port McNeill**

1801 / Day-To-Day Fluctuations In Experiences Of Discrimination: Associations With Sleep And The Moderating Role Of Internalized Racism Among African American College Students

**Thomas E. Fuller-Rowell, PhD**

1832 / Racism, Social Cognition And Depression: Results Of A Pilot Longitudinal Study

**Elizabeth Brondolo, PhD**

1830 / Culture And Stress Reactivity: An Examination Of Simpatia

**Amanda M. Acevedo, BA**

1752 / Do Social Network Measures Or Social Support Explain The Ethnic Density Effect On Health For Older Latinxs And Others?

**Melissa Flores, PhD**

1656 / For Better Or For Worse: Marital Status Predicts Infant Birth Weight For Pregnant Hispanic Women

**Ryan L. Brown, BA**

**Symposium 1212 / BEYOND PANIC: AN UPDATE ON THE PROGNOSIS, RISK FACTORS AND TREATMENT OF PATIENTS WITH NON-CARDIAC CHEST PAIN**

Chair: *Guillaume Foldes-Busque, PsyD, PhD*

**Room: Parksville**

1213 / Prognosis Of Non-Cardiac Chest Pain In The 12 Months Following A Consultation In An Emergency Department

**Guillaume Foldes-Busque, PsyD, PhD**

1314 / Psychological Profiles Of Patients With Non-Cardiac Chest Pain: A 1-Year Follow-Up Study

**Marie-Andrée Tremblay, BA**

1352 / Explaining Non-Cardiac Chest Pain Related Impairment In Patients With Comorbid Anxiety Disorder

**Stéphanie Hamel, BA**

1316 / Feasibility And Impact Of A Brief Cognitive-Behavioral Intervention In Conjunction With An Aerobic Exercise Program For Managing Non-Cardiac Chest Pain: A Pilot Study

**Joanne Castonguay, BA**

**2:45pm – 3:00pm**

**Refreshment Break**

**Grand Ballroom Foyer**

**Junior Ballroom Foyer**

**3:00pm – 4:00pm**

**Concurrent Sessions**

**Symposium 1397 / NEW PERSPECTIVES ON REDUCING STRESS**

Chair: *Keely A. Muscatell, PhD*

**Room: Grand Ballroom A**

1575 / Self-Affirmation Reduces Neural Threat Responding And Self-Reported Stress, And Enhances Performance To An Evaluative Stressor

**Janine M. Dutcher, PhD**

1398 / Effects Of A Generativity Intervention On Inflammation And Well-Being In Older Women

**Mona Moieni, PhD**

1567 / Effects Of Beta-Adrenergic Receptor Blockade On Psychological And Physiological Responses To Acute Social Stress

**Keely A. Muscatell, PhD**

1454 / Prepared Safety As A Buffer Against Stress: Examining The Role Of Physical Warmth During Fear Learning

**Erica A. Hornstein, PhD**

This year, there is no cost to attend **ROUNDTABLE** sessions, which are first-come, first-served. We have also moved all roundtables to either breakfast or to late afternoon, to free up the lunch hour for catching up with colleagues, building collaborations, and enjoying beautiful Vancouver.

**Symposium 1442 / PAIN-RELATED FEAR, AVOIDANCE, AND DECISION-MAKING: NOVEL INSIGHTS FROM ASSOCIATIVE LEARNING, COMPUTATIONAL MODELING AND BRAIN IMAGING**

Chair: *Ann Meulders, PhD*  
**Room: Grand Ballroom B**

1443 / What Drives Your Pain Report? Decision Parameters And Their Relation To Self-Reported Pain  
**Jonas Zaman, PhD**

1444 / How Instructions, Learning, And Anxiety Shape Pain And Pain-Related Response  
**Lauren Y. Atlas, PhD**

1445 / Response To Learned Threat In Youth With Chronic Pain  
**Laura Simons, PhD**

1446 / Generalization Of Pain-Related Avoidance Behavior To Novel Contexts And Similar Movements  
**Ann Meulders, PhD**

**Panel Session: HOW CAN QUALITATIVE METHODOLOGIES ADVANCE THE EXCELLENCE & RELEVANCE OF PSYCHOSOMATIC MEDICINE RESEARCH?**

Speakers: *Joanna Brooks, PhD, Sarah Peters, PhD, and Alison Wearden, PhD*  
**Room: Parksville**

**Paper Session: NEW DEVELOPMENTS IN INTERVENTION RESEARCH**

Chair: *Linda Carlson, PhD*  
**Room: Port McNeill**

1571 / Mechanisms Of Change In Therapist And Web Delivered Cognitive Behavioural Therapy (CBT) For Irritable Bowel Syndrome (IBS): Process Analysis From The Actib Randomised Controlled Trial (RCT)  
**Rona Moss-Morris, PhD**

1593 / Exploring Floatation-Rest As A Novel Intervention For Anxiety Sensitivity  
**Justin S. Feinstein, PhD**

1702 / Exploring The Immunological Effects Of Floatation-Rest And Its Interaction With Anxiety Sensitivity  
**M C. Flux, MS, MA**

1493 / Psychogenic Nonepileptic Seizures In Youth: Psychophysiology Characteristics & Biofeedback Training Outcomes  
**Tyson R. Sawchuk, MS**

**Panel Session: A CALL TO ACTION: EMBRACING CULTURALLY INCLUSIVE BIOBEHAVIORAL RESEARCH**

Speakers: *Danielle L. Beatty Moody, PhD, LaBarron K. Hill, PhD, Tené T. Lewis, PhD, Julian Thayer, PhD, John M. Ruiz, PhD*  
**Room: Junior Ballroom ABC**

**Paper Session: BIOPSYCHOLOGY IN PATIENT POPULATIONS**

Chair: *Nathalie Moise, MD*  
**Room: Junior Ballroom D**

1674 / Development And Psychometric Evaluation Of The Psychosocial Screening Instrument For Adult Trauma Patients (PSIT)  
**Maria Karabatzakis, MSc**

1773 / C Reactive Protein And Its Association With Depression In Patients Receiving Treatment For Metastatic Lung Cancer  
**Daniel McFarland, DO**

1319 / Associations Of Atypical Depressive Symptoms With Insulin Resistance In Depressed Primary Care Patients  
**Aubrey L. Shell, BA**

1621 / Changes In Salivary Cortisol Levels In Patients With An Implantable Cardioverter Defibrillator: Associations With Clinical Characteristics And Depressive Symptoms  
**Willem J. Kop, PhD**

**4:00pm – 4:10pm**

**Transition**

**4:10pm – 5:25pm**

**Concurrent Sessions**

**Invited Symposium: Contemporary Perspectives on Stress and the Next Generation of Stress Measurement**

Moderator: *Aric Prather, PhD*  
 Panelists: *George Slavich, PhD; Wendy Berry Mendes, PhD, Julian Thayer, PhD, Suzanne Segerstrom, PhD, MPH*  
**Room: Grand Ballroom A**

**Symposium 1116 / RACE/ETHNICITY AND THE EFFECT OF PROTECTIVE FACTORS AND RISK FACTORS ON HEALTH: "DIMINISHING RETURNS" IN MATERNAL-CHILD HEALTH**

Chair: *Kharah M. Ross, PhD*  
**Room: Junior Ballroom ABC**

1429 / Racial Differences in Blood Pressure Sensitivity to Psychosocial Factors During Pregnancy  
**Anna M. Strahm, MS**

1187 / Socioeconomic status and gestational length in Indigenous and White women: Evidence for "Widening Health Disparities"  
**Kharah M. Ross, PhD**

1117 / Maternal Sleep, Depressive Symptoms, and Risk for Spontaneous Early Birth: Implications for Racial Disparities in Birth Outcomes  
**Lisa M. Christian, PhD**

1463 / Stress Management Intervention Effects on Cortisol Patterns among Latina and Non-Latina Mothers and their Infants  
**Guido Urizar, PhD**

**Symposium 1306 / RESPIRATION AT THE MIND - BODY INTERFACE: BASIC FINDINGS AND TREATMENT APPLICATIONS**

Co-Chairs: *Thomas Ritz, PhD, Juliet Kroll, MA*

Discussant: *J. Richard Jennings, PhD*

**Room: Grand Ballroom B**

1320 / Effects of Hyperventilation and Brief Respiratory Training on Vasovagal Reactions to Blood Donation

**Blaine Ditto, PhD**

1376 / Effects Of Depression On Airway Function In Asthma: Exploring Neural And Immune Pathways

**Bruce D. Miller, MD**

1552 / Exploring Central Nervous System Processing Of Emotion In Asthma: Potential For A Blunted Neural Response

**Juliet L. Kroll, MA**

1591 / Subcortical Gray Matter Volume In Asthma: Associations With Disease History, Fear Of Asthma, Clinical Outcomes, And Anxiety Response To Stress-Induction

**Thomas Ritz, PhD**

1647 / Training In Slow (6/Min) Breathing Improves General Resilience

**Paul M. Lehrer, PhD**

**Paper Session: DEPRESSION**

Chair: *Ian Kronish, MD, MPH*

**Room: Junior Ballroom D**

1308 / Gut Leakiness Predicts Women's Depressive Symptoms One And Two Years Later

**Annelise Madison, BA**

1745 / Lung Cancer Biology And Its Association With Depression And Systemic Inflammation

**Daniel C. McFarland, DO**

1475 / Baseline Frailty Predicts Sleep Fragmentation, Self-Rated Health, And Depressive Symptoms: Results From A Nationally Representative Prospective Cohort Of Older Adults

**Jennifer L. Guida, PhD**

1605 / Longitudinal Persistence And Dimensions Of Depressive Symptoms: Associations With Hair Cortisol And Plasma C - Reactive Protein

**Eleonora Iob, MSc**

1119 / Association Between Immigrant Status And Antidepressant Use In U.S. Adults: NHANES 2005-2014

**Jay S. Patel, MS**

**Paper Session: PAIN**

Chair: *Mark A. Lumley, PhD*

**Room: Port McNeill**

1123 / Impact Of A Comprehensive Lifestyle Intervention On Pain, Depressed Mood, Stress, Inflammation, And Telomeric Activity For Individuals With Chronic Pain

**Katrina R. Hamilton, MS**

1383 / The Effects Of A Pain Psychology And Neuroscience Self-Evaluation Intervention: A Randomized Clinical Trial

**Christopher P. Urbanik, BA**

1678 / Identify Functional And Anatomical Regional Brain Network Properties Are Associated With Widespread Pain

**Jennifer Labus, PhD**

1734 / Care Management For The Effective Use Of Opioids (Cameo): A Randomized Trial

**Matthew J. Bair, MD**

1612 / The Role Of Autonomic Dysfunction And Responses Of Inflammation To Mood, Pain, Fatigue, And Autonomic Function In FM And ME/CFS

**Kristy Themelis, PhD**

**5:25pm – 5:30pm**

**Transition**

**5:30pm– 6:30pm**

**Roundtables & Special Events**

**Roundtable: Getting Started in Computational Neuroscience**

Chair: *Richard Lane, MD, PhD*

Panel: *Hugo Critchley, DPhil, FRCPsych; Sarah Garfinkel, PhD; Sahib Khalsa, PhD; Frederike Petzschner, PhD; Ryan Smith, PhD*

**Room: Grand Ballroom A**

**Roundtable: Minority Women in Health Sciences: A Conversation Between APS Members & The APA Division 38 Society for Health Psychology Diversity Council**

Facilitators: *Patricia I. Moreno, PhD, Marcia M. Tan, PhD, MPH, Diana A. Chirinos, PhD, Luz M. Garcini, PhD*

**Room: Junior Ballroom ABC**

**Salon #2: Meet with the Professors**

*Please note: attendance is on a first-come, first-served basis.*

**Andrew Steptoe & Julian Thayer**

**Room: Junior Ballroom D**

**Suzanne Segerstrom & Laura Kubzansky**

**Room: Port Hardy**

**Martica Hall & Anna Marsland**

**Room: Gulf Islands A**

**Wellness Activity: Art Making with Johanna Czamanski-Cohen**

**Room: Port Alberni**

Note: if you are attending a WELLNESS Activity and haven't completed a disclaimer yet, please visit the APS Registration Desk.

**6:30pm – 6:45pm**

**Remembering John Cacioppo**

**Room: Grand Ballroom Foyer**



**6:30pm – 7:45pm**

**Poster Session 2**  
Posters #123-218 will be presented.  
**Room: Grand Ballroom**

**7:30pm**

**SIG Meeting: Emerging Leaders**  
**Room: Bar One**

**7:45pm**

**Past Leaders Dinner**  
Offsite (*invitation only*)  
Meet in lobby at 7:45 or pick up map at  
APS Registration Desk

## SATURDAY, MARCH 9

**7:00am – 6:00pm**

**Annual Meeting Registration**  
**Lower Lobby**

**7:00am – 8:00am**

**Continental Breakfast**  
**Grand Ballroom Foyer**  
**Junior Ballroom Foyer**

**7:00am – 8:00am**

**Roundtables & Special Events**

**Roundtable: Psychological Therapy for Centralized Pain:  
An Integrative Assessment and Treatment Model**

Facilitator: *Mark Lumley, PhD*

**Room: Junior Ballroom ABC**

**Roundtable: Balancing Teaching and Scholarship at R3,  
M1/M2/M3, and Baccalaureate Institutions**

Facilitators: *Julie K. Creameans-Smith, PhD, Alyssa D. Cheadle,  
PhD, Christine Guardino, PhD*

**Room: Junior Ballroom D**

**2020 Program Committee Meeting (*invitation only*)**

**Room: Gulf Islands BC**

**8:00am – 8:15am**

**Data Blitz**

**Room: Grand Ballroom A/B**

*Best Trainee Posters of the Day Data Blitz!* Each morning, we'll be kicking off the day with a data blitz. Be sure to come early and learn about some of our most exciting trainee poster presentations of the day in fast-paced 2 minute talks! Saturday presenters include Kelsey Corallo, BS, Drake Levere, MA, Michael Parrish, MA, and Hillary Rowe, BSc

**8:15am – 9:00am**

**APS Members Meeting**

**Room: Grand Ballroom A/B**

**9:05am – 9:55am**

**Plenary**

**Herbert E. Weiner Early Career Award Lecture:  
An Inflammatory Story: How Traumatic Stress Causes Ill  
Health**

Introduction: *Thomas Neylan, MD*

Speaker: *Aoife O'Donovan, PhD*

**Room: Grand Ballroom A/B**

**10:00am – 10:50am**

**Plenary**

**Paul D. McLean Award Lecture:**

**On the Nature of Feeling**

Introduction: *Hugo D. Critchley, DPhil, FRCPs*

Speaker: *Antonio Damasio, MD, PhD*

**Room: Grand Ballroom A/B**

**11:00am – 12:15pm**

**Poster Session 3**

Posters #219-310 will be presented  
and a lite lunch will be offered

**Room: Grand Ballroom AD**

Attendees are invited to enjoy a lite lunch while viewing the posters during the final poster session of the meeting. Poster presenters should remove their posters no later than 1:45pm or they will be taken down, and stored until the end of the day, however the integrity of posters left after 1:45pm cannot be guaranteed.

**12:15pm – 1:30pm**

**Concurrent Sessions**

**Symposium 1182 / A MECHANISM-FOCUSED APPROACH  
TO BEHAVIORAL INTERVENTION RESEARCH:  
PROMOTING HEALTH BY ENGAGING KEY UNDERLYING  
PROCESSES**

Co-Chairs: *Lisbeth Nielsen, PhD, Paige Green, PhD, MPH*

**Room: Grand Ballroom A**

1379 / The NIH Science Of Behavior Change Mechanism-  
Focused Approach To Behavior Change Research

**Jennifer A. Sumner, PhD**

1382 / Increasing Autonomy Support To Promote Weight Loss  
In Couples

**Talea Cornelius, PhD**

1380 / Mindfulness Training Engages Interpersonal Processes:  
A Randomized Controlled Trial

**Emily K. Lindsay, PhD**

1381 / Mindfulness-Based Blood Pressure Reduction: Stage 1  
Single-Arm Clinical Trial

**Eric Loucks, PhD**

**Symposium 1101 / MINDFULNESS AND  
CARDIOVASCULAR HEALTH: OUTCOMES, MECHANISMS  
& INDIVIDUAL DIFFERENCES**

Chair: *Jeffrey Greeson, PhD*

Discussant: *Maria Llabre, PhD*

**Room: Junior Ballroom ABC**

1103 / Mindfulness And Cardiovascular Health: Qualitative  
Mechanism Evidence

**William Nardi, BSc**

1102 / Does Trait Mindfulness Buffer Cardiovascular Risk?  
Baseline Analyses From The Serenity Study

**Gabrielle Chin, AB**

1105 / Moderating Effects of Trait Mindfulness & Compassion on Biological Responses to Emotional Stress: Implications for CVD Risk  
**Jeffrey Greeson, PhD**

1104/ The Mindful Heart Study: Results From A Pilot Randomized Controlled Trial Of Mindfulness-Based Stress Reduction For Cardiac Patients  
**Susan A. Everson-Rose, PhD**

**Symposium 1522 / BIOBEHAVIORAL AND NEUROBIOLOGICAL MECHANISMS OF PLACEBO EFFECTS**

Chair: Andrea Evers, PhD  
Discussant: Madelon Peters, PhD  
**Room: Junior Ballroom D**

1523 / The Role Of Placebo Effect Of Oxytocin And Exogenous Oxytocin On The Brain Activity: An FMRI Study  
**Aleksandrina Skvortsova, MSc**

1524 / Placebo Effects Elicited By Classical Conditioning Of Antihistaminergic Effects For Itch  
**Stefanie H. Meeuwis, MSc**

1525 / Cue And Treatment Expectations In Pain Modulation  
**Elizabeth A. Necka, PhD**

1526 / Healthy, Pathological And Extreme Physical Performances: The Role Of Placebo Effects  
**Alessandro Piedimonte, PhD**

**LATE BREAKING CLINICAL TRIALS 2: CANCER RESEARCH**

Moderator: Johanna Czamanski-Cohen, PhD  
**Room: Grand Ballroom B**

1039 / The Seamless Study: A Clinical Trial Evaluation Of A Smartphone App-Based Mindfulness Intervention For Cancer Survivors  
**Utkarsh Subnis, PhD**

1447 / Participant Retention and Adherence In Behavioral Trials: Early Results from an Ongoing Preference-Based Comparative Effectiveness Trial of Mindfulness Based Cancer Recovery vs. Taichi/Qigong for Cancer Survivors (The Match Study)  
**Devesh V. Oberoi, PhD**

1589 / Development And Pilot Test Of A Brief Behavioral Intervention For Distressed Patients Undergoing Surgery For Gastrointestinal Cancer  
**Chelsea G. Ratcliff, PhD**

1811 / The Effects Of A Cognitive Behavioral Intervention On Worry About Cancer Progression Among Women With Gynecologic Malignancies  
**Chantel M. Ulfing, MS**

1822 / Kindness To Others Or To Oneself: An Online Pilot Randomized Controlled Trial To Enhance Well-Being In Breast Cancer Survivors  
**Marcie D. Haydon, MA**

**Paper Session: PRENATAL FACTORS & CHILD OUTCOMES**

Chair: Clayton Hilmert, PhD  
**Room: Port McNeill**

1672 / Prospective Associations Between Prenatal Maternal Cortisol And Child Health  
**Hannah M. Schreier, PhD**

1649 / Prenatal Maternal DHEA Moderates Associations Between Prenatal Cortisol And Infant Temperament  
**Laura Glynn, PhD**

1517 / Effects Of A Prenatal Mindfulness Intervention On Infant Stress Physiology And Behavioral Regulation In A Low-Income, Multi-Ethnic, High-Stress Sample  
**Nicole R. Bush, PhD**

1226 / Maternal Mindful Disposition, Perceived Stress, Alpha Amylase, And Cortisol: A Longitudinal Analysis On Maternal And Infant Stress Response  
**Olivia Silke, BA**

1047 / Systematic Review And Meta-Analysis Of Associations Between Pregnancy-Related Anxiety And Child Development  
**Stephana J. Cherak, MSc**

1765 / The Impact Of Prenatal Maternal Stress On Regulation Development: A Follow Up Of The 2009 Red River Flood Study  
**Angela G. Bagne, MS**

**Symposium 1394 / LINKED LIVES, BODIES, AND MINDS: HEALTH CONSEQUENCES AND BOUNDARY CONDITIONS OF PHYSIOLOGICAL SIMILARITY AND SYNCHRONY IN CLOSE RELATIONSHIPS**

Co-Chairs: Stephanie J. Wilson, PhD, Kuan-Hua Chen, PhD  
Discussant: Melissa Gerald, PhD  
**Room: Port Alberni**

1431 / Diminished Physiological Linkage Between Patients With Behavioral Variant Frontotemporal Dementia And Their Caregivers  
**Kuan-Hua Chen, PhD**

1432 / Long-Term Health And Relationship Outcomes Of Physiological Synchrony In Older Couples  
**Theresa Pauly, MA**

1430 / For Better And Worse? The Importance Of Closeness, Satisfaction, And Age In Spouses' Cardiometabolic Similarity  
**Stephanie J. Wilson, PhD**

1:30pm – 1:45pm

Break



1:45pm – 3:15pm

Concurrent Sessions

**Paper Session: HEALTH BEHAVIORS**Chair: *Crista Crittenden, MPH, PhD***Room: Junior Ballroom D**

1434 / The Day-Level Association Between Affective States, Self-Reported Time In Exercise, And Diurnal Cortisol Rhythm In Adults In The United States  
**Cheng K. Fred Wen, PhD**

1124 / Exploring The Effects Of Physical Activity And Psychological Stress On The Prevalence Of Psychological And Physical Health Conditions In A Nationally Representative Sample  
**Benjamin A. Hives, BKin**

1220 / Sex Differences In The Stimulated Cytokine Response To Aerobic Exercise Training  
**Richard P. Sloan, PhD**

1042 / Too Much On Your Plate: Food As A Stressor For Women With Body Image Concerns  
**Mora A. Reinka, MS**

1597 / Impact Of Menstrual Cycle Phase On Food Cue-Elicited Brain Potentials  
**Jana Strahler, PhD**

1652 / Short Sleep Duration In The Month Following Acute Coronary Syndrome Is Associated With 6-Month Hospital Readmission Risk  
**Ari Shechter, PhD**

**Symposium 1411/ EMOTION REGULATION AND VARIABILITY IN RELATION TO DAILY STRESSORS AND HEALTH**Co-Chairs: *Claudia Trudel-Fitzgerald, PhD, Lewina Lee, PhD*  
Discussant: *Aric Prather, PhD***Room: Grand Ballroom A**

1415 / Optimism, Stress, And Affective Dynamics: Prospective Findings From The VA Normative Aging Study  
**Lewina O. Lee, PhD**

1417 / Emotion And Cortisol Dynamics And Daily Stress In A National Sample Of Adults  
**Rebecca G. Reed, PhD**

1416 / Emotional Vulnerability To Short Sleep Predicts 10-Year Change In Functional Status  
**Nancy L. Sin, PhD**

1414 / Death Of Anger: Anger Frequency And Expression, And Cause-Specific Mortality Risk  
**Claudia Trudel-Fitzgerald, PhD**

**Symposium 1362 / MECHANISMS OF POSTTRAUMATIC STRESS DISORDER AND CARDIOVASCULAR DISEASE: IS IT THE CHICKEN OR THE EGG?**Co-Chairs: *J. Douglas Bremner, MD, Viola Vaccarino, MD, PhD***Room: Junior Ballroom ABC**

1364 / "PTSD In Patients With Acute Coronary Syndromes And Cardiovascular Disease: What Comes First?"  
**Donald Edmondson, PhD**

1365 / Posttraumatic Stress Disorder After Myocardial Infarction: Onset And Pathways Of Risk  
**Viola Vaccarino, MD, PhD**

1366 / Longitudinal Assessment of PTSD and Cardiovascular Disease  
**Beth Cohen, MD**

1367 / Novel Multi-Modality Imaging Of The Brain, Peripheral Vasculature And Cardiovascular System In Patients With PTSD On Cardiovascular Disease  
**Zahi A. Fayad, MD**

**Paper Session: CANCER**Chair: *Linda E. Carlson, PhD***Room: Grand Ballroom B**

1437 / Rural Residence Is Related To Poorer Quality Of Life And Shorter Survival In Epithelial Ovarian Cancer Patients  
**Susan K. Lutgendorf, PhD**

1509 / The Association Between Body Mass Index (BMI), Quality Of Life, And Cancer Symptoms In Women With Breast Cancer  
**Emalee Kiser, MA**

1721 / Spontaneous Increase In Self-Compassion Is Associated With Fewer Symptoms And Improved Well-Being In Cancer Survivors  
**Mimi Mehlsen, PhD**

1428 / Associations Between Disease-Specific Coping Strategies And Sleep Outcomes Among Lung Cancer Patients  
**Alyssa K. Choi, BA**

1753 / Examining Mediators Of The Effect Of Coping Strategies On Quality Of Life For Women Undergoing Chemotherapy For Breast Cancer  
**Melissa Sartain, BS**

1163 / The Use Of The Center For Epidemiological Studies-Depression Scale For Screening Advanced Cancer Patients  
**Jennifer L. Steel, PhD**

**Paper Session: CHILD & ADOLESCENT HEALTH**Chair: *Jennifer J. McGrath, PhD, MPH***Room: Port McNeill**

1407 / Early Childhood Mental Health And Cardiometabolic Dysregulation At Age 9: A Prospective Cohort Study  
**Farah Qureshi, MHS**

1255 / Dispositional Coping Predicts Stress Reactivity In Overweight/Obese Adolescents  
**Tiwaloluwa A. Ajibewa, MS**

1300 / Overweight And Obese Adolescents Decrease Calorie Consumption In Response To An Acute Laboratory Stressor  
**Rebecca E. Hasson, PhD**

1774 / Dim Light Melatonin Onset Markers To Quantify Circadian Phase In Children And Adolescents  
**Joanne Ramil, BSc**

1395 / Insomnia Severity Index Adapted For Children : Preliminary Validation In Children Aged 8 To 12 Consulting In Child Psychiatry  
**Karolane Renauld, PhD Student**

1551 / Adolescent And Parent "Shift-And-Persist" Scores Are Associated With Adolescent Antibody Response To Influenza Vaccination  
**Sarah M. Lyle, MS**

### **Symposium 1335 / LGBT HEALTH**

Co-Chairs: *Robert-Paul Juster, PhD, Mark Hatzenbuehler, PhD*  
**Room: Port Alberni**

1684 / Minority Stress Theory Turns 15: A Systematic Review Of Associations Between Minority Stress Constructs And Mental Health Outcomes Among Sexual Minorities  
**Travis Salway, PhD**

1666 / LGBT Stress, Non-LGBT Stress, And Diurnal Cortisol: Examining The Effects Of Daily Stressors On Diurnal Cortisol In A Sample Of Sexual Minority Young Adults  
**Wilson Figueroa, PhD**

1336 / Stress Biomarker Research Among Lesbian, Gay, Bisexual, And Transgender People  
**Robert-Paul Juster, PhD**

1842 / Geopolitical And Psychosocial Indicators Of Perceived Distress, Mental Health, And Allostatic Load Among Transgender Men  
**L. Zachary DuBois, PhD**

**3:15pm – 3:30pm**

**Refreshment Break**  
**Junior Ballroom Foyer**

**3:30pm – 4:30pm**

**Concurrent Sessions**

### **Paper Session: EMOTION**

Chair: *Sara Levens, PhD*  
**Room: Port McNeill**

1273 / Stressed? Maybe Skip The Coffee: The Interactive Effects Of Caffeine And Chronic Stress On Responses To Emotional Stimuli  
**Lydia G. Roos, MA**

1329 / Resting Heart Rate Variability And Avoiding Emotional Experiences: The Differential Role Of Trait Anxiety Between Sexes  
**Nicholas P. Joseph, MA**

1128 / Physiological And Emotional Responses To Anger Recall In Socially Inhibited Adults  
**Stefanie Duijndam, MSc**

1353 / Is Recall Bias Similar For Emotions And Pain? Evidence From Studies Among Patients With Chronic Pain  
**Marta Walentynowicz, PhD**

### **Paper Session: CHANGING HEALTH BEHAVIORS**

Chair: *Julia Boehm, PhD*

**Room: Junior Ballroom D**

1014 / Randomized Clinical Trial Of Brief Behavioral Treatment For Insomnia In Heart Failure  
**Kristie M. Harris, PhD**

1692 / Changing Eating Behavior In Canteens For Good: Preliminary Results From A Multimodal Complex Intervention  
**Joachim E. Fischer, MD**

1343 / Text Messaging Interventions To Increase Physical Activity: A Systematic Review And Meta-Analysis  
**Christopher M. Celano, MD**

1704 / Identifying Common Versus Specific Genetic Influences On Substance Use: A Genetically Informed Approach  
**Eleonora Iob, MSc**

### **Symposium 1727 / DEPRESSION RISK AND PREVENTION IN BREAST CANCER PATIENTS**

Co-Chairs: *Karen L. Weihs, MD, Annette Stanton, PhD*  
Discussant: *Janine Giese-Davis, PhD*  
**Room: Junior Ballroom ABC**

1731 / Coping Profile Transitions And Depressive Symptoms In The Year Following Breast Cancer Diagnosis  
**Jacqueline H. Kim, PhD**

1732 / Heart Rate Variability Interacts With Contextual Life Stress To Predict Depressive Symptoms: A Prospective Cohort Study In Women With Breast Cancer  
**Joshua Wiley, PhD**

1733 / An Intervention Targeting Cancer-Related Coping And Emotion Regulation In Breast Cancer Patients At Risk For Depression  
**Mairead H. McConnell, MA**

### **Symposium 1141 / NUTRITION AND MENTAL HEALTH IN CHILDREN AND YOUTH**

Chair: *Gerald Giesbrecht, PhD*  
Discussant: *Paul Veugelers, PhD*  
**Room: Port Alberni**

1164 / Choline Intake During Pregnancy Buffers The Impact Of Stress On Maternal And Infant Cortisol Reactivity  
**Jenna Thomas-Argyriou, MSc**

1260 / Nutritional And Dietary Interventions For Mood Disorders In Youth  
**Taban Salem, PhD**



1261 / Nutrient Supplementation For Irritability, Inattention, And Post-Natural Disaster Stress In Youth  
**Jeanette Johnstone, PhD**

**Panel Session: COLUMBIA STAGES OF BIOPSYCHO-SOCIAL AWARENESS: (CS-BPSA): A Conceptual Model and a Tool for Clinical Practice and Research**

Speakers: *Alla Landa, PhD and Douglas Drossman, MD*  
**Room: Parksville**

**4:40pm– 5:40pm**

**Roundtables & Special Events**

**Roundtable: Emerging Leaders: Data for the Masses: Using Publicly Available Data for Academic and Medical Career Advancement**  
**Room: Port McNeill**

**Roundtable: Stress in Primary Care: Aces, Strains, or What?**  
Facilitators: *Lawson Wulsin, MD, George Slavich, PhD*  
**Room: Junior Ballroom D**

**Roundtable: Brain & Emotion in Mind-Body Interactions: A Discussion with Dr. Antonio Damasio**  
Facilitators: *Antonio Damasio, MD, PhD; Hugo Critchley, DPhil, FRCPsych; Richard Lane, MD, PhD*  
**Room: Junior Ballroom A/B/C**

**Roundtable: Psycho-oncology**  
Facilitators: *Linda Carlson, PhD, Claudia Trudel-Fitzgerald PhD*  
**Room: Parksville**

**Wellness Activity: Mindfulness Meditation with Jeff Greeson**

**Room: Port Alberni**

Note: if you are attending a WELLNESS Activity and haven't completed a disclaimer yet, please visit the APS Registration Desk.

**5:40pm – 6:30pm**

**Silent Auction to Benefit Downtown Eastside Women's Centre**  
**Room: Grand Ballroom Foyer**

APS is conducting a silent auction to provide the Society and the attendees an opportunity to give back by donating to a non-profit that focuses on the local area.

**6:45pm – 11:15pm**

**Closing Banquet**  
**Room: Grand Ballroom**

## Additional Information

### About APS

The American Psychosomatic Society is an international organization devoted to biopsychosocial research and integrated clinical care, and to providing a forum via its Annual Meeting and journal, *Psychosomatic Medicine*, for sharing this research. Its members are from around the world, including specialists from all medical and health-related disciplines, the behavioral sciences, and the social sciences. Membership information is available at the APS Registration Desk.

### Photo Release

By attending the APS Annual Meeting, registrants consent to be photographed during the course of the meeting, with the understanding that those images may be used in APS documents, publications or on the website. If you prefer to not have your image used by APS, please contact [info@psychosomatic.org](mailto:info@psychosomatic.org) or visit the APS Registration Desk.



## **2019 APS Annual Meeting Awards**

**Donald Oken Fellowship: Robert J. Boland, MD**

**Distinguished Scientist Award: Janice Kiecolt-Glaser, PhD**

**Patricia R. Barchas Award: Steve Cole, PhD**

**Herbert E. Weiner Early Career Award: Aoife O'Donovan, PhD**

**Paul D. MacLean Award: Antonio Damasio, MD, PhD**

---

### **APS 2019 Young Investigator Colloquium**

Elizabeth Andersen, PhD  
Ian Boggero, PhD  
Kyle Bourassa, MA  
Bernard Chang, MD, PhD  
Janine Dutcher, PhD  
Paul Geiger, PhD  
Kristie Harris, PhD

Devika Jutagir, PhD  
Yongjoo Kim, ScD  
Elena Makovac, PhD  
Devesh Oberoi, PhD  
Lisa Quad, PhD  
Kelly Rentscher, PhD  
Monika Sadlonova, MD

Andy Schumann, Dipl-Ing  
Anna Strahm, MS  
Kristy Themelis, PhD  
Gavin Trotman, MRes  
Caroline Trumpff, PhD  
Maaïke Van Den Houte, PhD  
Lauren Whitehurst, PhD

#### **APS Scholar Awards**

Ravi Bhatt, BS  
Elena Coley, BS  
Andrea Coppola, BA  
Cory Counts, BS  
Larisa Gavrilova, BA  
Eva Graham, MSc  
Eleonora Iob, MSc  
Annelise Madison, BA  
Andrew Manigault, MS  
Atina Manvelian, MA  
Laura Panagi, MSc  
Cheng Wen, PhD

#### **Diversity Initiative Travel Award**

Jason Ashe, Th.M  
Briana Brownlow, MA  
Victor Ekuta, BA  
Gina Gerardo, MA  
Marcia Tan, PhD  
DeWayne Williams, PhD

#### **MD Travel Award**

Zaneta Franklin, BSc  
Hiroe Hu, BSc  
Jason Patel, MD  
Adam Schweber, BA  
Robyn Stocks, BSc  
Rikki Winchester  
Eleanor Woodward, MD

#### **Travel Award for MacLean Scholars**

Jennifer MacCormack, MA  
Thomas Kraynak, MS

#### **Cousin's Center Global Outreach Award**

Dalia Abdelrahman, MD

# APS 77<sup>TH</sup> Annual Scientific Meeting – March 6-9, 2019 – Vancouver BC

## Meeting Objectives

At the conclusion of this meeting, participants will be able to:

1. To implement the cutting-edge theories and research that link peripheral physiology to our emotions, cognitions, and behaviors.
2. To understand plausible biopsychosocial mechanisms for these body-to-mind connections.
3. To recognize the implications of body to mind pathways for the future of psychosomatic medicine and human well-being.

## Continuing Education Information

### ACCME Credit Statement:

Amedco designates this live activity for a maximum of 22.5 AMA PRA Category 1 Credits™. Physicians should claim only the credit commensurate with the extent of their participation in the activity.

### ACCME Approval Statement:

In support of improving patient care, this activity has been planned and implemented by Amedco and the American Psychosomatic Society (APS). Amedco is jointly accredited by the American Council for Continuing Medical Education (ACCME), the Accreditation Council for Pharmacy Education (ACPE), and the American Nurses Credentialing Center (ANCC), to provide continuing education for the healthcare team.

### APA Credit Statement:

This activity has been approved for a maximum of 22.5 hours.

### APA Approval Statement:

This course is co-sponsored by Amedco and the American Psychosomatic Society. Amedco is approved by the American Psychological Association to sponsor continuing education for psychologists. Amedco maintains responsibility for this program and its content.

## 2018-2019 APS Council

Bruce L. Rollman, MD, President  
Suzanne C. Segerstrom, PhD, MPH, Immediate Past-President  
Susan Everson-Rose, PhD, MPH, President-Elect  
Daichi Shimbo, MD, Secretary-Treasurer  
  
Laura E. Degnon, CAE, Executive Director  
Sarah Shiffert, Associate Executive Director

### Council Members:

Lisa M. Christian, PhD  
Harald Gündel, MD  
Jeff Huffman, MD  
Gail Ironson, MD, PhD  
Kristen Salomon, PhD

## 2019 APS Annual Meeting Program Committee

Sarah Pressman, PhD, Program Chair

Wendy Birmingham, PhD  
Julia Boehm, PhD  
Jennifer Boylan, PhD  
Linda Carlson, PhD  
Jude Carroll, PhD  
Matthew Cribbet, PhD  
Crista Crittenden, PhD  
Marie Cross, MA  
Jenny Cundiff, PhD

Johanna Czamanski-Cohen, PhD  
Gerry Giesbrecht, PhD  
Annie Ginty, PhD  
Christoph Herrmann-Lingen, MD  
LaBarron Hill, PhD  
Marc Jarczok, Dipl. SoWi  
Brooke Jenkins, PhD  
Nataria Joseph, PhD

Ian Kronish, MD  
Richard Lane, MD, PhD  
Carissa Low, PhD  
Nathalie Moise, MD  
Keely Muscatell, PhD  
Jay Patel  
Jerrald Rector, PhD  
John Ruiz, PhD

Bruce Rollman, MD  
Suzanne Segerstrom, PhD  
Matthew Shay, MSc  
Eva Szigethy, MD  
Janet Tomiyama, PhD  
Claudia Trudel-Fitzgerald, PhD  
Sarah Williams, PhD  
Peggy Zoccola, PhD

Download the Meeting APP  
from your APP store:

Search: APS Meetings

Follow the meeting on Twitter:



#APS2019VAN



AMERICAN  
PSYCHOSOMATIC  
SOCIETY

AMERICAN PSYCHOSOMATIC SOCIETY

Managed by Degnon Associates

6728 Old McLean Village Drive • McLean, VA 22101

703-556-9222 • info@psychosomatic.org • www.psychosomatic.org

# #APS2019VAN

## Join the Conversation

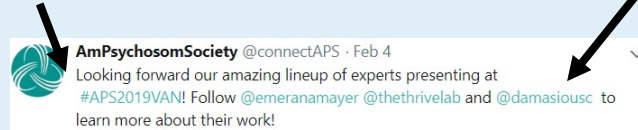


### Why Tweet the Conference?

-  Amplify conference experience to wider audience
-  Disseminate and increase impact of research
-  Generate international engagement
-  Grow community of colleagues and collaborators
-  Provide real-time input on presentations
-  Have a chance to win prizes (who wouldn't love a discount for the next APS Meeting?)

### Building a Tweet

1. Use our Conference Hashtag **#APS2019VAN** and other relevant hashtags to be listed on Twitter with other people Tweeting about similar ideas.



2. Tag Conference speakers, departments, universities, centers and other organizations that have a Twitter account to acknowledge their work!



3. Post pictures of presentation slides and include links to speakers' articles for eye-catching and informative content on people's Twitter feeds!

### #Hashtags and @Handles

In addition to our Conference hashtag **#APS2019VAN**, include these popular hashtags and handles in your Tweets to increase engagement!

<b>#psychosomatic</b>	<b>#genomics</b>	<b>@connectAPS</b>
<b>#medicine</b>	<b>#interoception</b>	<b>@PsychosomMed</b>
<b>#health</b>	<b>#mentalhealth</b>	<b>@APSPresident</b>
<b>#microbiome</b>	<b>#depression</b>	<b>@sarahpressman</b>
<b>#inflammation</b>	<b>#stress</b>	<b>@CityofVancouver</b>
<b>#biomarkers</b>	<b>#SDoH</b>	<b>#ThisIsHealthPsych</b>

Don't have a Twitter account yet?  
Want to improve your tweeting skills?



Look out for the "Sweet Tweets" session during the Wednesday evening poster session to get started!

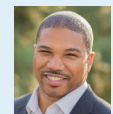
### Social Media Task Force

Tag us and follow us- we'll retweet you!

Chair



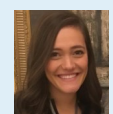
Claudia T-Fitzgerald  
**@claudiafitz**



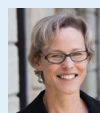
Charles Jonassaint  
**@drjonassaint**



Daryl O'Connor  
**@healthpsycleeds**



Julia Holber  
**@HealthTechPitt**



Linda Carlson  
**@Linda\_E\_Carlson**



Tamsyn Hawken  
**@HealthPsychTam**